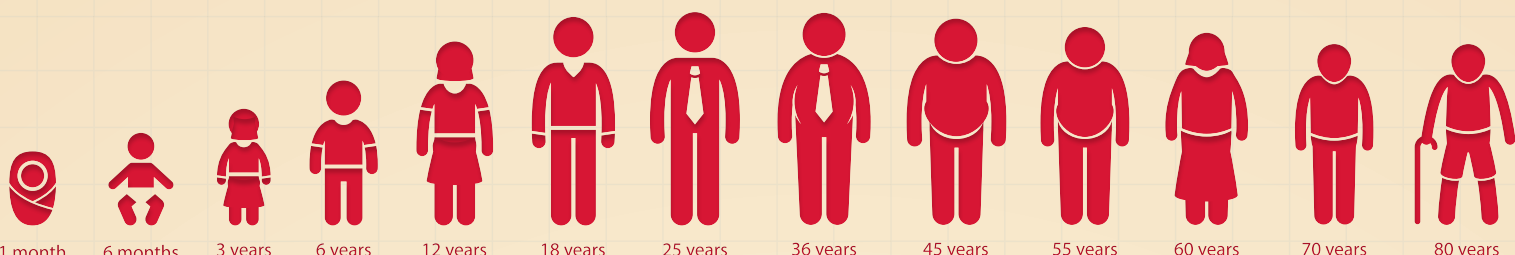


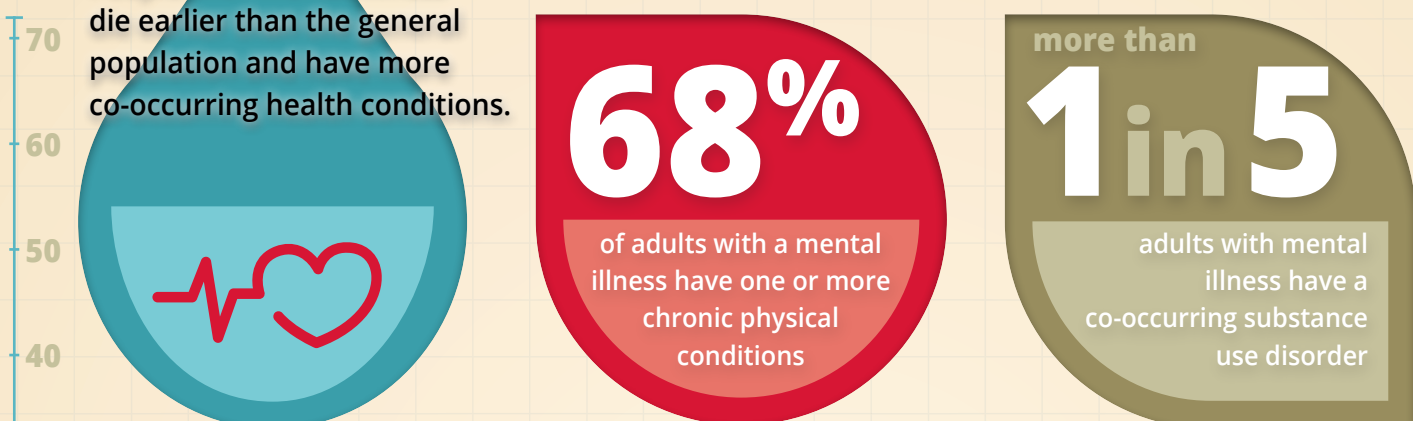
CAN WE LIVE LONGER?

Integrated Healthcare's Promise

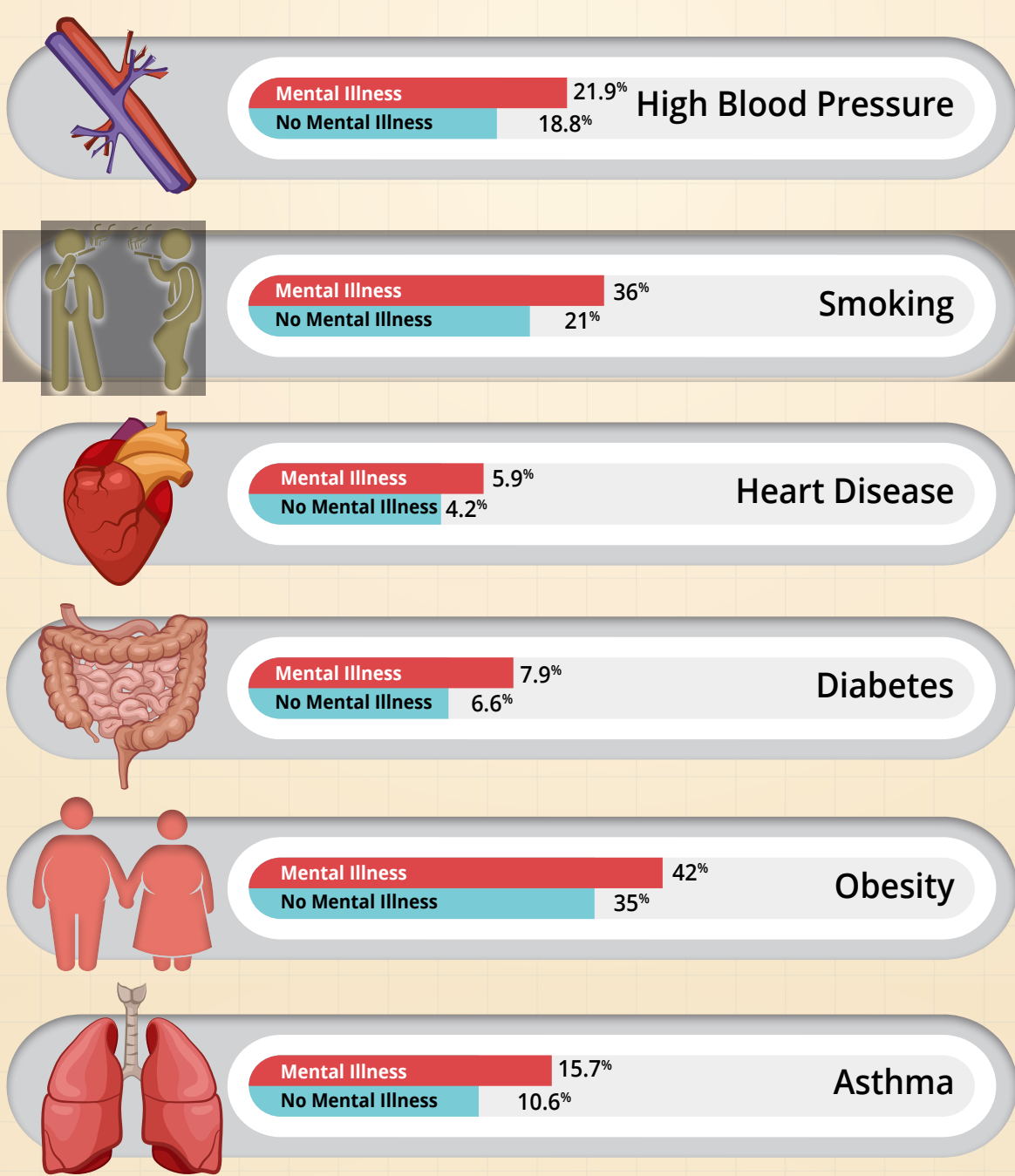


The PROBLEM

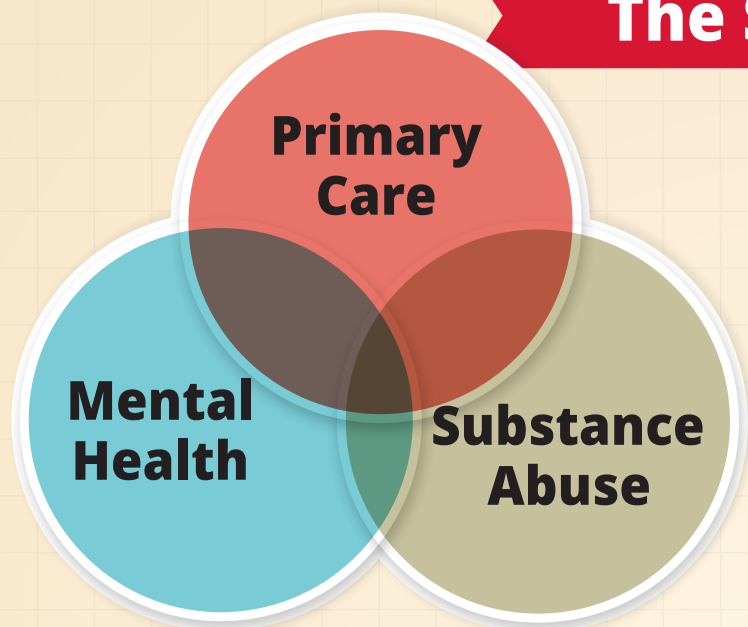
People with mental illness die earlier than the general population and have more co-occurring health conditions.



Co-occurrence between mental illness and other chronic health conditions:



The SOLUTION

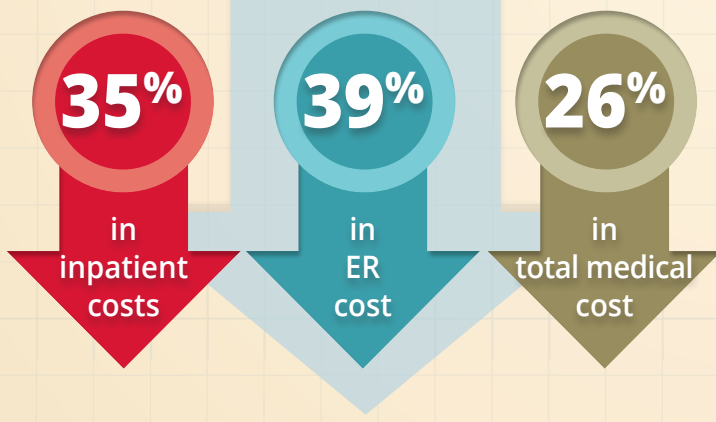


The solution lies in integrated care – the coordination of mental health, substance abuse, and primary care services.

Integrated care produces the best outcomes and is the most effective approach to caring for people with complex healthcare needs.

INTEGRATION WORKS

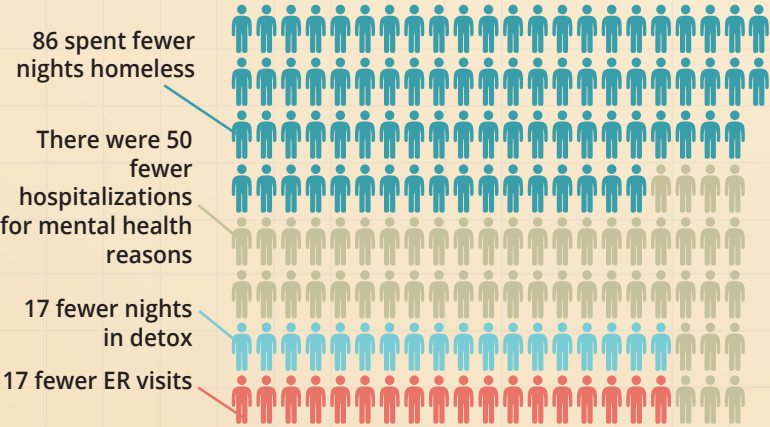
Community-based addiction treatment can lead to...



Reduce Risk → Reduce Heart Disease (for people with mental illnesses)

Maintenance of ideal body weight (BMI = 18.5 – 25)	=	35%-55% decrease in risk of cardiovascular disease
Maintenance of active lifestyle (~30 min walk daily)	=	35%-55% decrease in risk of cardiovascular disease
Quit Smoking	=	50% decrease in risk of cardiovascular disease

One integration program* enrolled 170 people with mental illness. After one year in the program, in one month:



This is **\$213,000** of savings per month.

That's **\$2,500,000** in savings over the year.

Integration works. It improves lives. It saves lives. And it reduces healthcare costs.

SAMHSA-HRSA
Center for Integrated Health Solutions

NATIONAL COUNCIL FOR BEHAVIORAL HEALTH
MENTAL HEALTH FIRST AID
Healthy Minds. Strong Communities.

Substance Abuse and Mental Health Services Administration
SAMHSA
www.samhsa.gov 1-877-SAMHSA-7 (1-877-726-4727)

www.integration.samhsa.gov

Who Do You Know?
1 in 5

PEOPLE HAVE A MENTAL ILLNESS OR ADDICTION

Sources

www.dsamh.utah.gov/docs/mortality-morbidity_nasmhpd.pdf
www.samhsa.gov/data/2k11/WEB_SR_078/SR110StateSMIAMI2012.htm
www.samhsa.gov/co-occurring/topics/data/disorders.aspx
www.samhsa.gov/data/nsduh/2k8nsduh/2k8results.pdf
www.cdc.gov/features/vitalsigns/SmokingAndMentalIllness
www.ncbi.nlm.nih.gov/pubmed/16912007

Weisner C. Cost Studies at Northern California Kaiser Permanente. Presentation to County Alcohol & Drug Program Administrators Association of California Sacramento, California, Jan. 28, 2010.

Rich-Edwards JW, Manson JE, Hennekens CH, Buring JE. The primary prevention of coronary heart disease in women. N Engl J Med. 1995;332:1758-1766.

Bassuk SS, Manson JE. Epidemiological evidence for the role of physical activity in reducing risk of type 2 diabetes and cardiovascular disease. J Appl Physiol. 2005;99:1193-1204.

Hennekens CH. Increasing burden of cardiovascular disease: current knowledge and future directions for research on risk factors. Circulation. 1998;97:1095-1102.

Heritage Behavioral Health Center, based on data in...
www.ahrq.gov/research/findings/evidence-based-reports/mhsapc-evidence-report.pdf

* A grantee of the Substance Abuse and Mental Health Services Administration's Primary and Behavioral Health Care Integration program.